

**E Slim recycling waste bin with choice of lids**

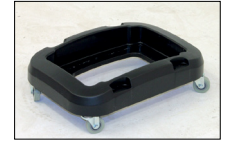
- Easily identifiable front facing recycling lids with openings.
- Sturdy container suitable for multiple indoor applications and ideal for centralised collection.
- Bin material - plastic.
- H x W x D: 790 x 330 x 480mm.
- Capacity: 60L.



Code	Lid colour	Price £ each 1-2	Price £ each 3+
383013DX8	Grey slot	49.99	42.99
383014DX8	Yellow circle	49.99	42.99
383015DX8	Grey swing	49.99	42.99

**F Slim recycling waste bin with choice of lids**

- Manufactured from plastic.
- 60L Capacity.
- Choice of recycling lids.
- Optional wheeled dolly available.



Dolly

Code	Description	Price £ each 1-4	Price £ each 5+
411556DX8	60L recycling bin body	29.99	24.99
411558DX8	Blue lid	19.99	17.99
411560DX8	Red lid	19.99	17.99
411559DX8	Yellow lid	19.99	17.99
411557DX8	Dolly	39.99	29.99

**G Recycling bin kit - Set of 3**

- Kit consists of 3 x 60 litre flip top bins.
- Ideal for segregation of office waste at source.
- Bin material - polypropylene.
- Dimensions H x W x L: 690 x 410 x 335 for each individual bin.



Code	Type	Price £ per set
370287DX8	3 x bins with multi-coloured lids	59.99
392564DX8	3 x bins with blue lids	59.99

**H Coloured lid recycling swing bins**

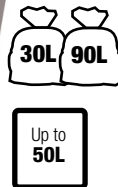
- Ideal for hospitals, caterers, schools and more.
- Colour coded lids for waste segregation.
- Capacity 50 litres.
- H x W x D: 645 x 290 x 360mm.



Code	Lid Colour	Price £ each 1-4	Price £ each 5+
330351DX8	Green	29.99	24.99
330352DX8	Red	29.99	24.99
365144DX8	White	29.99	24.99
330350DX8	Blue	29.99	24.99

**I Coloured lid recycling bins**

- Made from 100% polypropylene.
- Body colour: dark grey.
- Available in 25 and 50 litre capacity.
- Choice of four coloured lids.
- D x W x H: 25L: 400 x 190 x 510mm (50L: 400 x 400 x 510mm).



Lid colour	25 litres		50 litres	
	Code	Price £ each 1-3	Code	Price £ each 1-3
Green	384284DX8	19.99	384288DX8	23.99
Blue	384286DX8	19.99	384290DX8	23.99
Yellow	384283DX8	19.99	384287DX8	23.99
Red	384285DX8	19.99	384289DX8	23.99

**J Colour coded stackable recycling bin system**

- Ideal for general storage or separating waste items for recycling.
- Supplied with lid and recycle labels.
- Polypropylene construction.
- Optional castor pack.
- Capacity 50L.
- H x W x D: 345 x 400 x 635mm.



Nest easily



Optional castors



Colour	Pack qty 1 Code	Price £ each	Pack qty 12 Code	Price £ per pack of 12
Red	369045DX8	39.99	430190DX8	390.00
Yellow	369047DX8	39.99	430187DX8	390.00
Green	369046DX8	39.99	430189DX8	390.00
Blue	369044DX8	39.99	430188DX8	390.00
Castors (set of 4)	369048DX8	7.49		