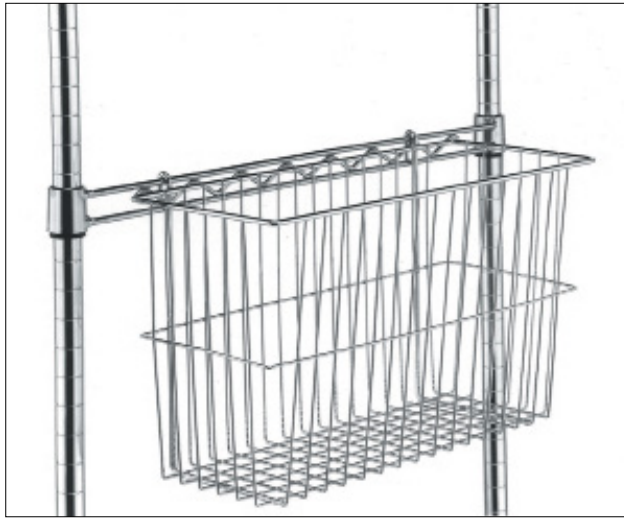




### B Storage baskets

- Hang from wire shelf edges.



| Code      | H x W x D mm    | Price £ each |
|-----------|-----------------|--------------|
| 317347DX8 | 345 x 127 x 180 | 49.99        |
| 317348DX8 | 440 x 190 x 127 | 57.99        |
| 317349DX8 | 440 x 190 x 255 | 72.99        |

### C Ledges

- Provide 100mm high retention to back or sides of shelf.
- Can be stacked for additional height.



| Code      | Length mm | Price £ each |
|-----------|-----------|--------------|
| 360356DX8 | 356       | 17.99        |
| 360357DX8 | 457       | 28.99        |
| 360358DX8 | 610       | 30.99        |
| 360359DX8 | 762       | 33.99        |
| 360360DX8 | 914       | 34.99        |
| 360361DX8 | 1067      | 39.99        |
| 360362DX8 | 1219      | 41.99        |
| 360363DX8 | 1524      | 44.99        |
| 360364DX8 | 1829      | 49.99        |

### D Dividers

- Used front to back of shelf to create 203mm high compartments.



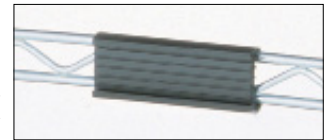
| Code      | Depth mm | Description | Price £ each |
|-----------|----------|-------------|--------------|
| 314227DX8 | 356      | Chrome      | 25.99        |
| 314230DX8 | 457      | Chrome      | 32.99        |
| 314232DX8 | 610      | Chrome      | 39.99        |

### E Label holder

- Snap-on label holders fit easily to front of wire shelf for quick identification.
- 75mm long.



Clear label holder



Grey label holder

| Code      | Colour | Price £ each |
|-----------|--------|--------------|
| 309417DX8 | Grey   | 7.99         |
| 309416DX8 | Clear  | 7.99         |

### F Post clamps

- Provide maximum strength in runs of shelving.
- For attaching more than one bay of shelving together securely.



| Code      | Price £ each |
|-----------|--------------|
| 309420DX8 | 8.99         |

### G Triangular footplates

- Replaces the standard levelling bolt in the foot of the post. Help spread the load and are used for bolting units to the floor.

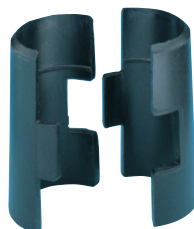


| Code      | Price £ each |
|-----------|--------------|
| 309419DX8 | 14.99        |

### H Plastic split sleeves

- Supplied in packs of 4.

**4**  
PACK



| Code      | Type     | Price £ per pack |
|-----------|----------|------------------|
| 309413DX8 | Standard | 10.99            |

### I Decorative levelling feet

- Compensates for uneven surfaces.



| Code      | Price £ each |
|-----------|--------------|
| 359373DX8 | 13.99        |