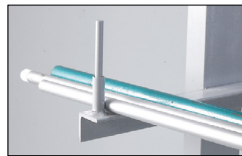


E Free standing bar storage racks

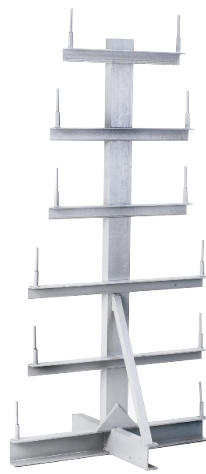
- Floor standing - no holding bolts or additional bracing required. • Fully welded with socket and retaining pin for each arm. • Distance between arms: 250mm.
- Enamel grey finish. • N.B. Units must not be placed more than 2000mm apart.



Single sided bar rack



Retaining pin



318945DX8

Code	Type	Overall height mm	Overall width mm Top	Overall width mm Bottom	No. of levels	Price £ each
318944DX8	Single sided	1375	320	540	5	254.00
318946DX8	Single sided	1750	510	575	6	275.00
318943DX8	Double sided	1305	530	750	5	274.00
318945DX8	Double sided	1655	530	900	6	399.00

F Vertical bar storage rack

- Welded steel construction with steel base.
- 4, 6, and 8 bay versions.
- Distance between dividers 250mm.
- Pre-drilled for floor mounting (fixings not included).



4 bay vertical bar rack

Code	Description	H x D x L mm	Weight kg	Price £ each
386439DX8	4 Bay	1500 x 600 x 1200	84	359.00
386440DX8	6 Bay	1500 x 600 x 1800	108	469.00
386441DX8	8 Bay	1500 x 600 x 2400	135	539.00

G Light duty cantilever storage racking

- Suitable for the storage of panels and rods.
- Colour is Grey (RAL 7024). • Overall H x W: 2000 x 1000mm.
- Arms adjustable at 100mm intervals, and drilled to take 8mm dia. end stops (available separately). • Starter bays include 2 uprights, cross bracing and 6 arms (single sided) or 12 (double-sided).
- Add on bays include 1 upright, cross bracing and 3 arms (single sided) or 6 (double-sided). • Maximum capacity 260kg per arm.
- NB. Not suitable for standard fork lifts.

Single sided racking with arms

Arm length mm	Starter Bay Code	Price £ each	Add On Bay Code	Price £ each
400	427534DX8	941.00	427543DX8	530.00
600	427535DX8	1015.00	427536DX8	567.00
800	427542DX8	1066.00	427537DX8	592.00

Arm length mm	Starter Bay Code	Price £ each	Add On Bay Code	Price £ each
400	427538DX8	1255.00	427541DX8	686.00
600	427539DX8	1399.00	427544DX8	759.00
800	427540DX8	1506.00	427545DX8	812.00

Additional arms

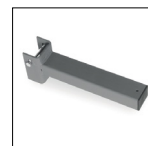
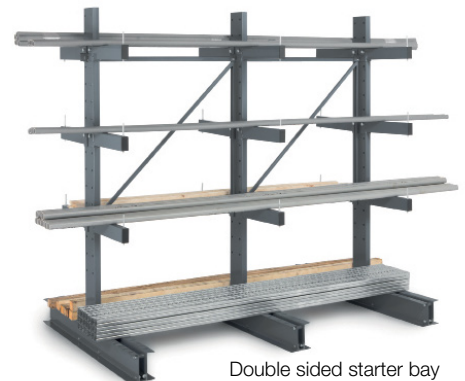
Code	Length mm	Price £ per pair
427546DX8	400	77.49
427547DX8	600	90.49
427548DX8	800	96.49

End stops

Code	Height mm	Price £ each
374806DX8	145	14.49
374807DX8	165	14.49
374808DX8	185	14.49



Single sided starter bay with add on bay



Additional arms

Double sided starter bay with add on bay