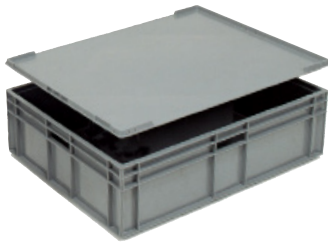


Storage & Shelving Storage Boxes & Containers

A Large european stacking containers

- Strong polypropylene containers.
- Fit standard half-Euro (600 W x 800 L mm) pallets.
- Solid sides and base.
- Vertical sides provide maximum usable volume.
- Operational temperature -20°C to +80°C.
- Capacity of 87 litres
- External H x W x L mm: 235 x 600 x 800
- Internal H x W x L mm: 205 x 555 x 755



87L

Code	Price £ each
307498DX8	53.49

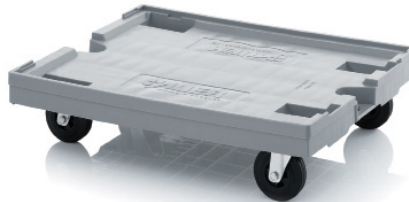
Lids

- To fit 800 x 600 containers.
- Protects contents and prevents contamination.

Code	Price £ each
308702DX8	29.99

B Large plastic dolly for 600 W x 800 L mm euro container

- Suitable for large 600 W x 800 L mm, or 400 W x 600 L mm euro containers.
- Stackable, to save space when not in use.
- Tough ABS plastic construction.
- Recessed step - fits straight sided and nesting Euro containers.
- 2 steering and 2 braked wheels.
- Smooth running, low noise 125mm dia. solid rubber castors.
- 250kg capacity.
- Overall W x L: 620 x 820mm.
- Weight 6kg.



Plastic dolly for 600 W x 800 L mm containers

Code	Price £ each
386998DX8	119.00

C Steel dolly for euro stacking container

- For 400 W x 600 L mm and 600 W x 800 L mm euro containers.
- Blue powder coated finish.
- On 4 swivel 100mm dia. rubber tyred castors.
- Made in UK.



800 x 600mm

600 x 400mm

Code	Internal W x L mm	Capacity kg	Price £ each 1-3	Price £ each 4+
321515DX8	400 x 600	100	103.00	94.99
321516DX8	600 x 800	200	126.00	115.00

D Euro container order picking trolleys

- Fully welded steel construction, epoxy powder coated silver/grey.
- Supplied with 400 W x 600 L mm euro containers.
- Handles fitted to aid manoeuvrability.
- Rear strap fitted to act as a safety stop when inserting containers.
- Overall H x W x D: 1500 x 470 x 700mm.
- Capacity 250kg.
- On four swivel 100mm dia. vulcanised rubber tyred castors, two braked, which offer low rolling resistance, non-marking and soft yet highly durable.
- UK made.



6 or 8 containers



Code	No. of containers	Container ext. height mm	Price £ each
428069DX8	6	170	456.00
428070DX8	6	200	466.00
428068DX8	8	120	466.00

E Multi-tier order picking trolley

- Holds max. eight 600 x 400mm std. euro, stack & nest or bale arm containers (available separately), max. 260mm height.
- Capacity 500kg, (60kg per shelf).
- Trays slide in/out from the front or back.
- Includes a bag hanger, scanner holder and storage basket.
- On four low noise 125mm polyurethane tyred swivel castors with buffers.
- Full width handle.
- Bright zinc plated steel construction.

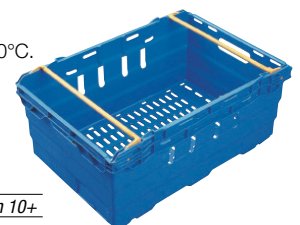


Trolley only

Code	Description	H x W x L mm	Price £ each 1-3	Price £ each 4+
429183DX8	Trolley only	1170 x 615 x 1010	270.00	257.00

F Blue 44L stack and nest tray

- Blue polypropylene.
- Ventilated base and sides.
- Suitable for use between -30°C to +80°C.
- 44 litre capacity.
- Ext H x W x D mm: 253 x 400 x 600.
- Int H x W x D mm: 226 x 352 x 548.
- Other colours on page 299.
- Made in UK.



Code	Price £ each 1-9	Price £ each 10+
371779DX8	22.49	19.49