



Codes in Green
Next Day Delivery

J Textured footrest

- Dual position height adjustment.
- Textured surface massages feet to relieve tension.
- Free floating platform allows legs to stretch.
- Contains 99% post-consumer recycled materials.
- Complies with EN ISO 9241-5.
- Platform size: 425 x 300mm.
- Height adjustments: 8.5/10.5cm.
- Incline range: up to 25° (approx.).

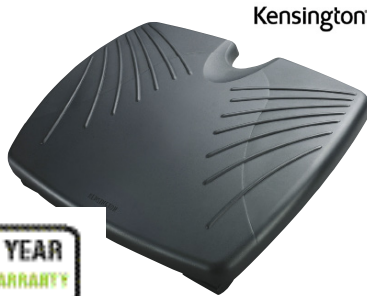


Fellowes

Code	Price £ each	Price £ each 2+
385705DX8	29.99	26.99

K Large adjustable footrest

- W x D: 450 x 350mm.
- 12 height and angle positions to support your feet.
- Contoured foot grip panel helps prevent slipping.
- Scratch resistant and easy to clean.



Kensington



Code	Price £ each
385704DX8	37.99

L Adjustable footrest

- Feature easy tilt adjust mechanism up to 20°.
- Non-slip textured platform.
- Platform W x D: 450 x 350mm.
- 316362DX8 features height adjustment from 3.5" to 5".



Kensington

Standard

Height adjust

Code	Description	Price £ each
316361DX8	Standard	44.99
316362DX8	With height adjustment	51.49

M Adjustable footrest with antibacterial protection

- Easy to adjust using foot pressure.
- Locking mechanism holds footrest in preferred position.
- Microban antimicrobial protection to inhibit the growth of stain and odour causing bacteria.



Fellowes

Code	Price £ each	Price £ each 2+
357007DX8	51.99	47.99

N Foot rest and ankle rocker

- Promotes a healthy posture and improves circulation by raising your feet and legs.
- Cover is hand washable for hygiene.
- H x W x D: 140 x 260 x 405mm.



Code	Colour	Price £ each
427321DX8	Yellow	47.49
427322DX8	Blue	47.49
427323DX8	Grey	47.49

O Seat cushion

- Promotes a healthy posture, improves circulation and relieves spinal pressure.
- Helps reduce discomfort, fatigue and stiffness that can result from extended periods of sitting and health conditions such as sciatica.
- Ideal for use at home, the office or the car.
- Cover is hand washable for hygiene.
- H x W x D: 75 x 355 x 455mm.



Code	Colour	Price £ each
427318DX8	Yellow	45.99
427319DX8	Blue	45.99
427320DX8	Grey	45.99

P Portable lumbar back support

- Compact design and easily removed.
- Supports back during extended periods of sitting.
- H x W x D: 54 x 304 x 126mm.
- High density foam to promote a neutral posture.
- Adjustable straps.
- Easy to clean.



Fellowes

Code	Price £ each	Price £ each 2+
411501DX8	28.99	24.99

Q Professional back support

- Design ensures stability.
- Lumbar support changes to natural body curvature.
- Promotes healthy posture.
- Fully adjustable.
- Suitable for most chairs.
- Microban protection fights harmful bacteria.
- Conforms with the BS EN ISO 9241, 1999: Ergonomic requirements for office.
- Life time warranty.



Fellowes

Code	Price £ each	Price £ each 2+
389126DX8	53.99	49.99

R Professional mesh back support

- Provides additional spinal support to maintain natural back curvature.
- Mesh allows air flow for increased personal comfort.
- Lumbar support.
- Gently moulds to your body's contours.
- Easy to attach to chair.
- H x W x D: 536 x 460 x 160mm.
- Conforms to EN ISO 9241-5.



Fellowes

Code	Price £ each	Price £ each 2+
395708DX8	52.99	48.49

Office